

**For Lease**  
1,000 sf - 1,600 sf Units  
Available



**3180 Isleville Street, Halifax, NS**  
**PID#s 00131409 & 40358012**

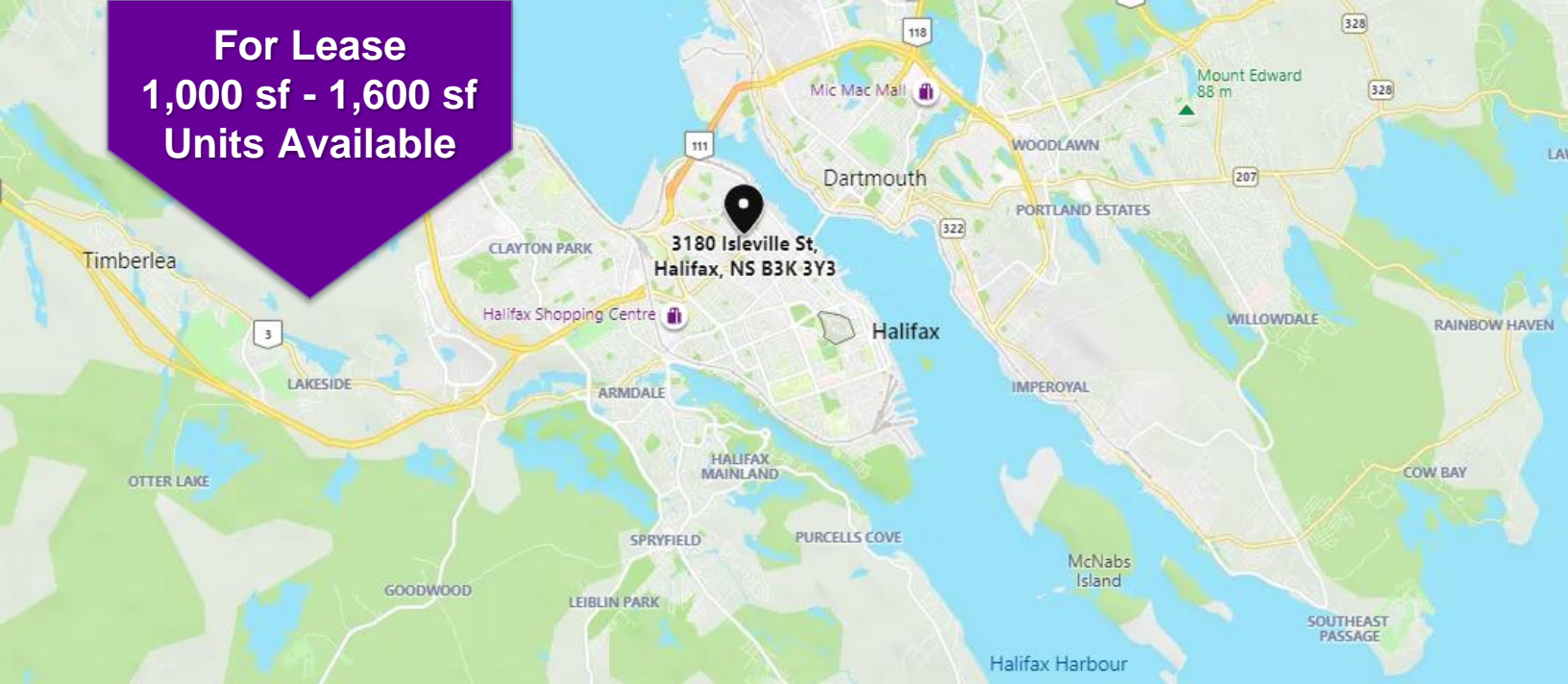
### **For Lease:**

Located in Halifax's trendy North End, this five unit commercial property is just steps away from the Central Business District. Property comprises of five units between 1,000 sf and 1,600 sf (one unit remaining). This property was reconstructed in 2021 and is ready for your improvements.

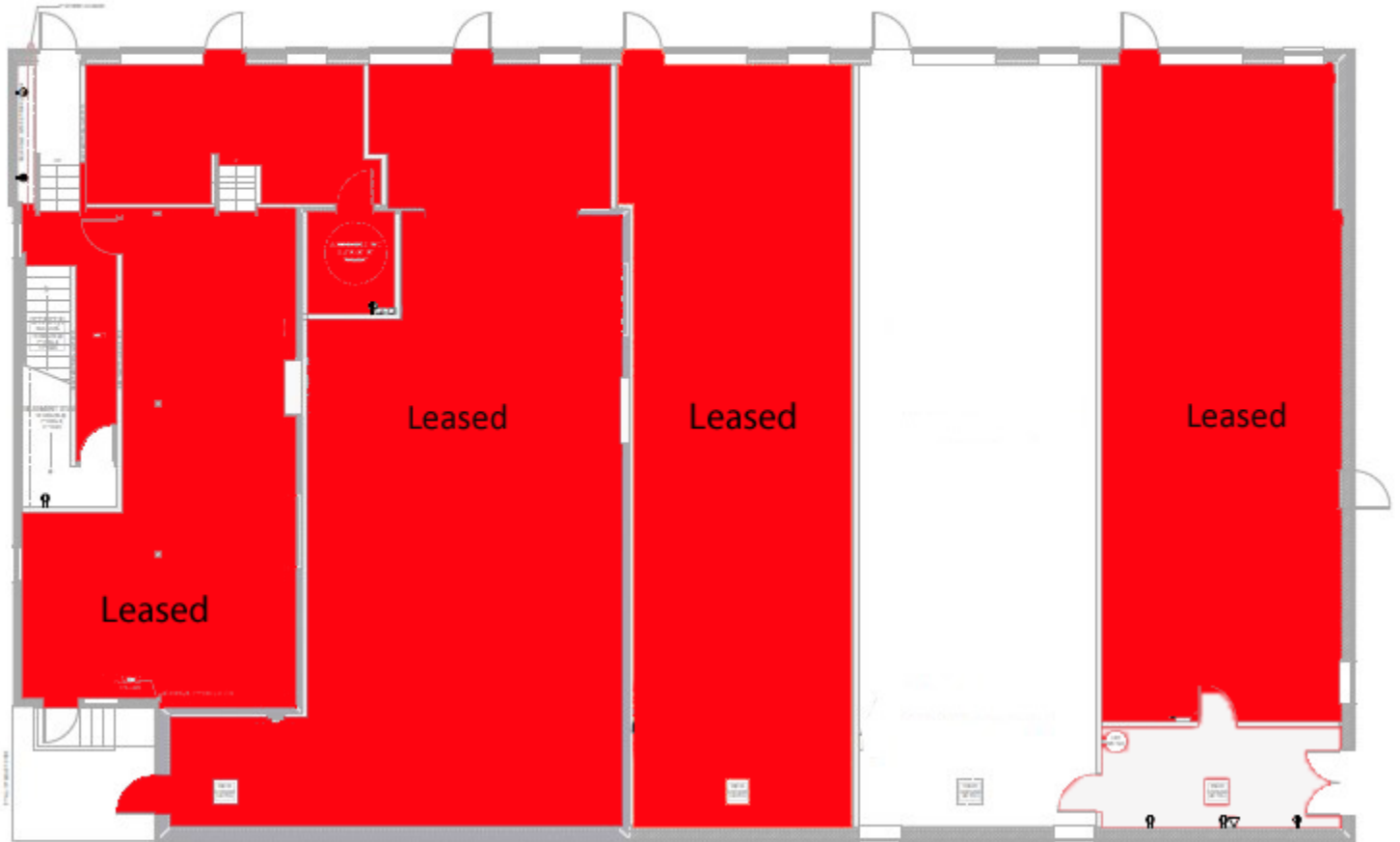
Asking Rent: \$27 psf net plus operating & utilities



**For Lease  
1,000 sf - 1,600 sf  
Units Available**



## Floor Plan:



## For more information:



**Ashley Urquhart**  
+1 902 429 1811 ext. 340  
ashley@turnerdrake.com



**Emily McClelland**  
+1 902 429 1811 ext. 345  
emcclelland@turnerdrake.com