

For Sale
Prime Commercial
Development Site
~ 4.5 acres

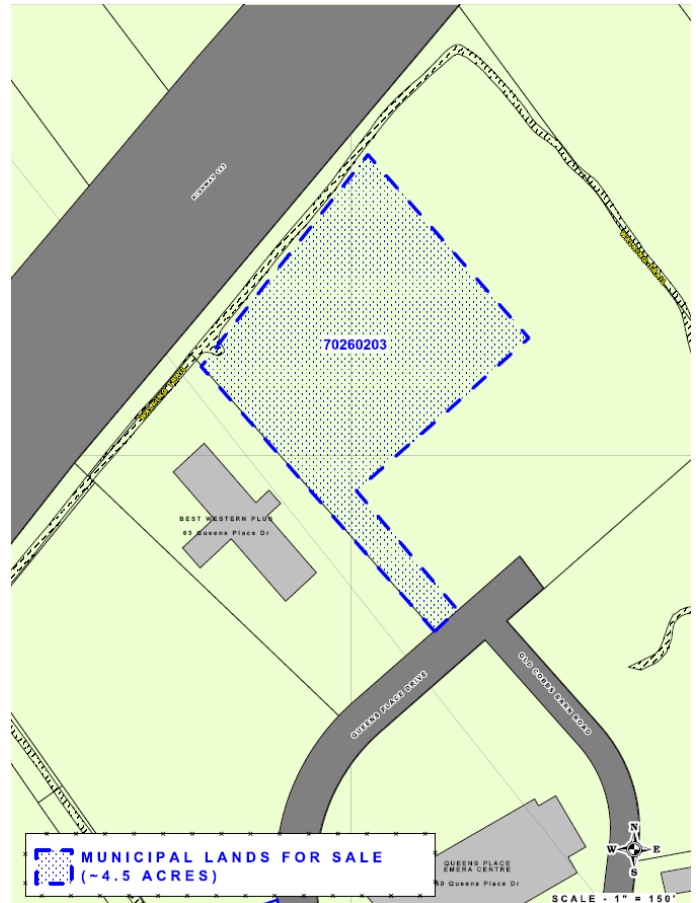


Queens Crossing

Liverpool, NS PID# 70260203

Property Features

- Total commercial development site consists of approximately 4.5 acres (to be surveyed)
- Located in the vibrant, year-round community of Liverpool, only 90 minutes from Halifax, Yarmouth & Digby
- Property adjacent to a Best Western Hotel and the Queens Place Emera Centre
- Municipal services available to site, storm laterals to each property in place (electrical to be accessed at rear of property)
- Exposure to Highway #103
- Access via Queens Place Drive
- Parcel can be subdivided to suit user requirements
- Adjacent to amenities (grocery, café, etc.)
- Competitive, fully inclusive tax rate
- MLS®



Pricing

\$2.95 per square foot

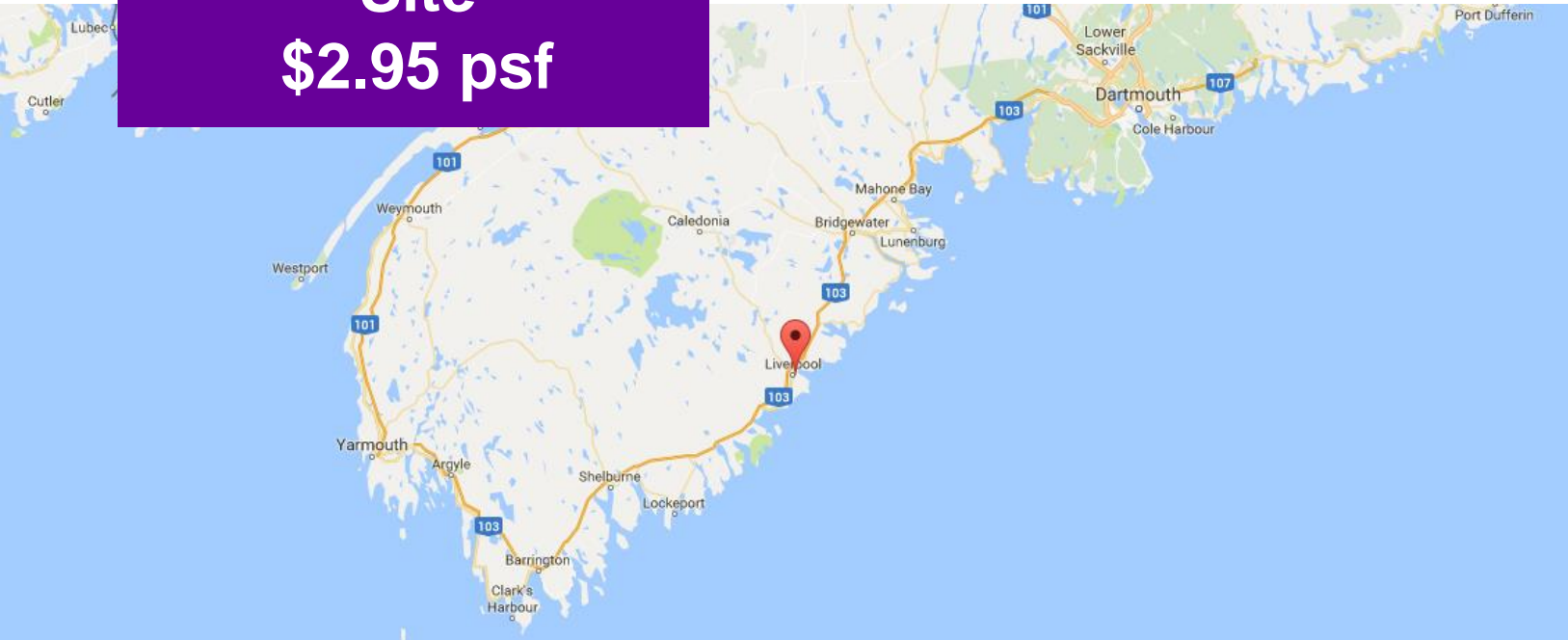
Ashley Urquhart

+1 902 429 1811

ashley@turnerdrake.com

Development Site

\$2.95 psf



PID# 70260203

- ~ 4.5 acres
- Excellent exposure to Highway #103
- Adjacent to Best Western hotel and Queens Place Emera Centre
- Zoned “Highway Commercial” and allows for numerous “as of right” commercial development uses
- Adjacent walking trail

